



# DARPP-32 Polyclonal Antibody

<b>Catalog No</b>	YP-Ab-12710
<b>Isotype</b>	IgG
<b>Reactivity</b>	Human;Mouse;Rat
<b>Applications</b>	WB;IHC;IF;ELISA
<b>Gene Name</b>	PPP1R1B
<b>Protein Name</b>	Protein phosphatase 1 regulatory subunit 1B
<b>Immunogen</b>	The antiserum was produced against synthesized peptide derived from human DARPP-32. AA range:41-90
<b>Specificity</b>	DARPP-32 Polyclonal Antibody detects endogenous levels of DARPP-32 protein.
<b>Formulation</b>	Liquid in PBS containing 50% glycerol, 0.5% BSA and 0.02% sodium azide.
<b>Source</b>	Polyclonal, Rabbit,IgG
<b>Purification</b>	The antibody was affinity-purified from rabbit antiserum by affinity-chromatography using epitope-specific immunogen.
<b>Dilution</b>	WB: 1/500 - 1/2000. IHC: 1/100 - 1/300. ELISA: 1/40000.. IF 1:50-200
<b>Concentration</b>	1 mg/ml
<b>Purity</b>	≥90%
<b>Storage Stability</b>	-20°C/1 year
<b>Synonyms</b>	PPP1R1B; DARPP32; Protein phosphatase 1 regulatory subunit 1B; DARPP-32; Dopamine- and cAMP-regulated neuronal phosphoprotein
<b>Observed Band</b>	32kD
<b>Cell Pathway</b>	Cytoplasm.
<b>Tissue Specificity</b>	Adipose tissue,Brain,Cerebellum,Colon,Ovary,
<b>Function</b>	function:Inhibitor of protein-phosphatase 1.,PTM:Dopamine- and cyclic AMP-regulated neuronal phosphoprotein.,PTM:Phosphorylation of Thr-34 is required for activity.,similarity:Belongs to the protein phosphatase inhibitor 1 family.,
<b>Background</b>	This gene encodes a bifunctional signal transduction molecule. Dopaminergic and glutamatergic receptor stimulation regulates its phosphorylation and function as a kinase or phosphatase inhibitor. As a target for dopamine, this gene may serve as a therapeutic target for neurologic and psychiatric disorders. Multiple transcript variants encoding different isoforms have been found for this gene. [provided by RefSeq, Oct 2011],
<b>matters needing attention</b>	Avoid repeated freezing and thawing!

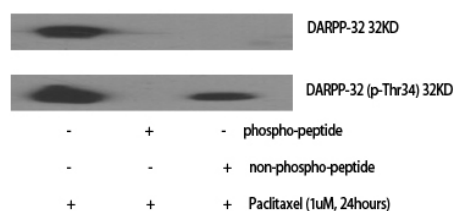


## Usage suggestions

This product can be used in immunological reaction related experiments. For more information, please consult technical personnel.

## Products Images

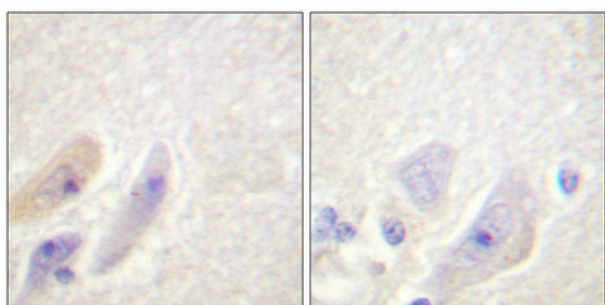
Western Blot analysis of various cells using DARPP-32 Polyclonal Antibody diluted at 1:500



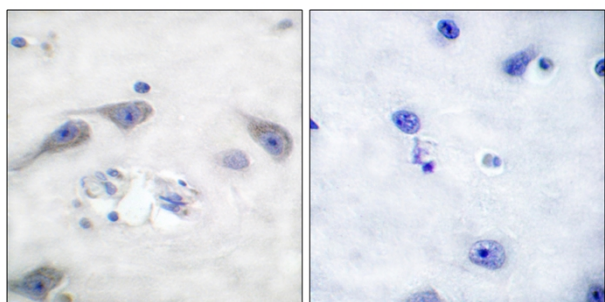
Western Blot analysis of COLO205 cells using DARPP-32 Polyclonal Antibody diluted at 1:500

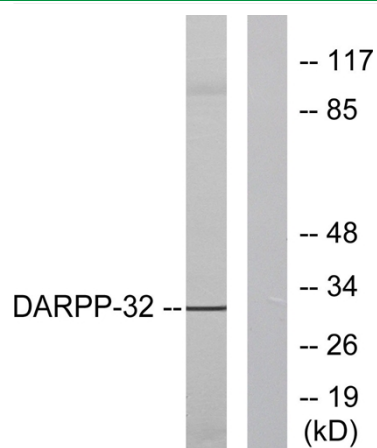


Immunohistochemical analysis of paraffin-embedded Human brain. Antibody was diluted at 1:100(4° overnight). High-pressure and temperature Tris-EDTA,pH8.0 was used for antigen retrieval. Negative contrl (right) obtained from antibody was pre-absorbed by immunogen peptide.



Immunohistochemistry analysis of paraffin-embedded human brain tissue, using DARPP-32 Antibody. The picture on the right is blocked with the synthesized peptide.





Western blot analysis of lysates from 293 cells, treated with EGF 200ng/ml 30', using DARPP-32 Antibody. The lane on the right is blocked with the synthesized peptide.